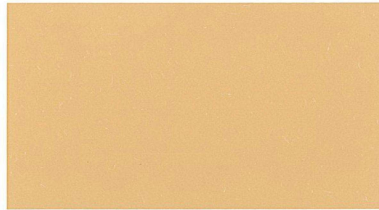


# Colour Chart

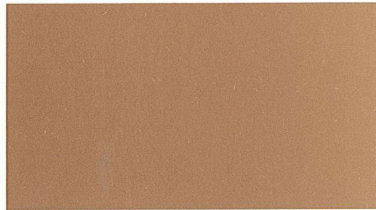
The indicated colours are just approximately RAL – colours and may be subject to differences due to the raw materials. Differences from the colour chart are possible.

**PLASTI CHEMIE**  
**Produktionsgesellschaft mbH**

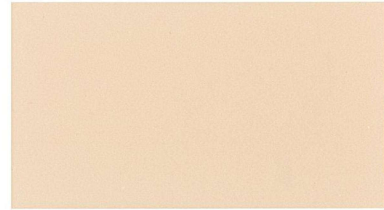
## Standard Colours



ca. RAL 1002 sandgelb



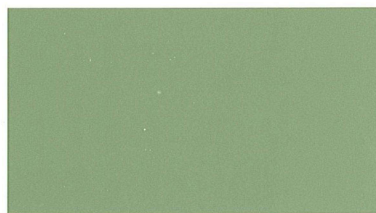
ca. RAL 1011 braunbeige



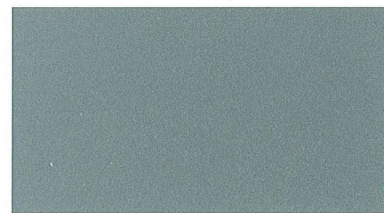
ca. RAL 1014 elfenbein



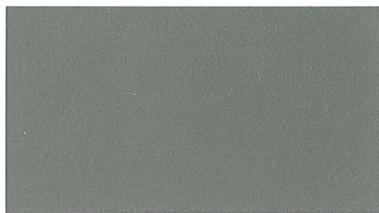
ca. RAL 6002 laubgrün



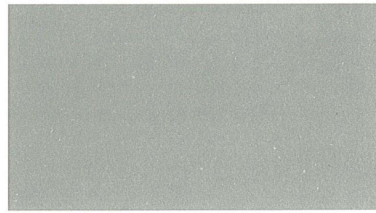
ca. RAL 6021 blassgrün



ca. RAL 7001 silbergrau



ca. RAL 7023 betongrau



ca. RAL 7030 steingrau



ca. RAL 7031 blaugrau



ca. RAL 7032 kieselgrau



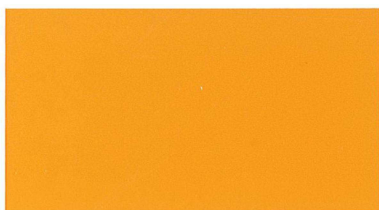
ca. RAL 7033 zementgrau



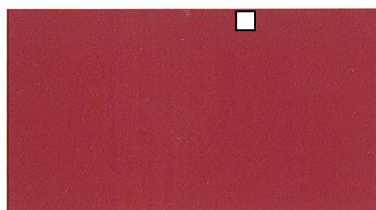
ca. RAL 7035 lichtgrau

**Additional colours are black and white**

## Special Colours (Sale with an extra charge)



ca. RAL 1007 echtgelb



ca. RAL 3013 tomatenrot



ca. RAL 5013 echtblau

**Plasti-Chemie Produktionsgesellschaft mbH**  
Falgardring 1  
D – 08223 Falkenstein / Germany

Telefon: +49 (0) 37 45/744 32-0  
Telefax: +49 (0) 37 45/744 32-27  
Email: [info@plasti-chemie.de](mailto:info@plasti-chemie.de)  
Internet: [www.plasti-chemie-international.de](http://www.plasti-chemie-international.de)